



Friday, April 12, 2024

THE HEIGHTS Community Center
8001 Dale Ave., Richmond Heights, MO

Navigating the New Frontier of Dementia Care

MEDICATIONS, TRAINING, AND BEYOND

MEMORY CARE HOME SOLUTIONS

Continuing Education Event

BROUGHT TO YOU BY



**MEMORY CARE
HOME SOLUTIONS®**



**SAINT LOUIS
UNIVERSITY™**

— EST. 1818 —



About

Memory Care Home Solutions

Continuing Education Event

in partnership with Saint Louis University Gateway Geriatric Education Center

MCHS is committed to providing education and training to the community, service providers, and healthcare professionals. Every year, we host our Annual Continuing Education Event and this year the workshop will provide an in-depth analysis of current and upcoming treatments and highlight the inter-disciplinary approach needed for comprehensive dementia care. Speakers include experts from the fields of neurology, pharmacy, occupational therapy, and social work, as well as the true experts in dementia care – people living with the disease themselves and their care partners. Speakers include Dr. Joy Snider, Dr. Mark Ruscin, Jan Fabick, and Mackenzie Jones.

Course Objectives

1. Learners will describe new pharmacological dementia treatments.
2. Learners will evaluate the benefits of an interdisciplinary approach to improve care outcomes of people living with dementia.
3. Learners will gain evidence-based skills in communicating and working within a team of dementia care practitioners.
4. Learners will identify nonpharmacological dementia treatments and their impact on people living with dementia and their care partners.



Agenda

8:00 – 8:25 am: Welcome & Introductions from Jill Cigliana, MSOT, OTR/L & Marla Berg-Weger, Ph.D., LCSW

8:25– 8:30 am: Introduction of Lead Learning Sponsor, Continuum Family of Services/Family Partners

8:30 – 9:45 am: Dr. Joy Snider, MD from Washington University Memory Diagnostic Center on new pharmacological interventions for dementia management (1.25 CEUs)

9:45 – 11:00 am: Jan Fabick, MSW, LCSW & Mackenzie Jones, BSW on overview of Dementia Navigation (1.25 CEUs)

11:00 – 11:10 am: Break & Vendor Fair

11:10 – 11:15 am: Introduction of Lead Learning Sponsor, Private Home Care

11:15 – 12:30 pm: Dr. Mark Ruscin, PharmD on pharmacological management of behavioral/psychological symptoms of dementia and dementia support (1.25 CEUs)

12:30 – 1:30 pm: Lunch & Vendor Fair

1:30 pm: Welcome back & Morning Recap

1:30 – 2:45 pm: Ask the Experts: Memory Care Home Solutions Care Ecosystem Team (Dr. Mark Ruscin, MCHS Dementia Navigators and Clinical Staff) on interdisciplinary collaboration in dementia care (1.25 CEUs)

2:45– 3:00 pm: Break

3:00 -4:00 pm: Jill Cigliana, MSOT, OTR/L & Panel on Innovative Caregiver Support Programs including people living with dementia, care partners, and providers from in-home care, adult day programs, long-term care (1 CEUs)

4:00-4:30: Closing/completion of course evaluation

Thank You

A special thank you to all who partnered with us as sponsors, exhibitors or with an advertisement. You made this event possible.

Thank you for joining us today!

Meet Our Speakers

Keynote Speaker: Dr. Joy Snider, MD



Dr. Snider received a B.A. in Biology from Northwestern University in 1979, then returned to Texas to the Medical Scientist Training Program at the University of Texas Southwestern Medical Center at Dallas, completing her M.D. and Ph.D. (in Biochemistry) in 1989. Dr. Snider completed the neurology residency program at Parkland Hospital in Dallas, Texas and joined the Neurology Department at Washington University in 1993 as a fellow, initially with a focus on mechanisms of neuronal injury in experimental models but more recently in clinical research. Dr. Snider's primary focus is on the diagnosis and treatment of neurodegenerative disorders, specifically dementing disorders. She works with colleagues at the Knight ADRC (<http://alzheimer.wustl.edu/>) on longitudinal research studies in aging and dementia and directs the Knight ADRC Clinical Trials Unit, where she leads in team in conducting clinical therapeutic trials for people with Alzheimer's disease and other dementias. Current interests include studying use of fluid and imaging biomarkers in clinical practice and implementation of new disease modifying therapies in clinical practice, specifically the Memory Diagnostic Center (<http://www.memoryloss.wustl.edu/>), the dementia specialty practice of Washington University School of Medicine faculty, where Dr. Snider serves as Medical Director.

Dr. Snider is also interested in neurology and dementia education. She served as the Program Director for the Adult Neurology Residency at Washington University/Barnes Jewish Hospital (<http://neuro.wustl.edu/education/adultneurologyresidency/>) for 13 years (until July 2022) and currently directs resident rotations at the Knight Alzheimer Disease Research Center (KADRC). She is interested in and encouraging and supporting trainees in careers in dementia research. She co-leads the Knight ADRC Research Education Component and is the PI for the Knight ADRC T32 training grant.

Dr. Mark Ruscin



Dr. Mark Ruscin is a Professor in the Department of Pharmacy Practice at SIUE School of Pharmacy. Dr. Ruscin is a native of central Illinois and joined SIUE in 2008 after spending 13 years with the University of Colorado-Denver School of Pharmacy and Center on Aging. He graduated with his Doctor of Pharmacy degree from the University of Illinois Chicago in 1993. After completing a pharmacy practice residency at the University of Illinois Hospital and Clinics in Chicago, he completed a geriatrics fellowship at the University of Rhode Island College of Pharmacy. He is a fellow of the American Society of Consultant Pharmacists (FASCP) and was elected as a fellow of the American College of Clinical Pharmacy in 2013 (FCCP). His teaching, clinical practice and research all center around the care of older adults. His practice site is in Springfield, Ill., where he spends time with the SIU School of Medicine, Department of Internal Medicine, the Department of Family and Community Medicine, and the Center for Clinical Research.

Jan Fabick, MSW, LCSW

Jan Fabick, MSW, LCSW serves as clinical social worker at Memory Care Home Solutions, bringing a wealth of experience and expertise to her role since joining the program team in 2012.

Jan possesses a deep passion for collaborating with family care partners and individuals living with dementia. With a background in social work, she offers a unique perspective that allows her to understand the nuanced needs of caregivers and provide invaluable support, especially during challenging times of crisis. Jan's dedication to advancing her clinical skills is reflected in her certifications in Cognitive Behavioral Therapy, Motivational Interviewing, Solutions-Focused Brief Therapy, TAP, Skills2Care, COPE, and Care Ecosystem. Her multifaceted expertise makes her a valuable asset to the Memory Care Home Solutions team and the broader community. She holds a BSSW and MSW from the Saint Louis University School of Social Work.



Mackenzie Jones



Mackenzie Jones is a Dementia Navigator at Memory Care Home Solutions. She holds a Bachelor of Science with a major in Social Work from Hannibal-LaGrange University. She is passionate about her work at Memory Care Home Solutions providing education and support to care partners and persons living with Alzheimer's disease and related dementias.

Mackenzie has experience working with older adults in many settings including skilled nursing facilities, in-home care, and community case management.

Jill Cigliana, MSOT, OTR/L

Jill Cigliana, a leader and catalyst for positive change in the field of dementia care, serves as Executive Director of Memory Care Home Solutions. With over 24 years of experience in acute and post-acute healthcare settings, Jill leads a dynamic team of professionals who push the boundaries of conventional approaches to pave the way for a more compassionate and effective future in the landscape of home and community-based dementia care.

She holds a M.S. degree in Occupational Therapy from Washington University in St. Louis and currently leads the Dementia Community of Practice for the American Occupational Therapy Association. She has served as Project Director for multiple grants in the Administration for Community Living's Alzheimer's Disease Program Initiative.



Memory Care Home Solutions



**MEMORY CARE
HOME SOLUTIONS®**

Memory Care Home Solutions provides **FREE** Dementia Navigation services to equip families with resources and skills to manage the progression of dementia at home. As a non-profit, this would not be made possible without generous donations and grant funding.

In addition to Dementia Navigation, MCHS provides:

Occupational Therapy & Home Safety Assessments



Psychotherapy and Counseling for Care Partners

Continuing Education & Professional Training



If you or anyone you know could benefit from services, please email help@memorycarehs.org or call us at 314-645-6247

Thank You to our Board of Directors

EXECUTIVE OFFICERS:

George Van Antwerp, President, Senior Manager, Deloitte Consulting, LLP

Wendy Cornett-Marquitz, CFRE, Vice President, Senior Vice President of Philanthropy and Chief Development Officer, Gateway Region YMCA

Mark Hood, Treasurer, President MEH Consulting and formerly CFO at Bob Evans, Caleres, Panera, Saks Holdings

Dave Rengachary, MD, Secretary, Senior Vice President and Chief Medical Director, Reinsurance Group of America

Jill Cigliana, MSOT, ORT/L, Executive Director, Memory Care Home Solutions

GENERAL DIRECTORS:

Sue Allen, Former Missouri State Representative

Erin Barr, President and Owner, Erin Barr Consulting

Harvey Brandvein, Vice President, Business Development, U.S. Individual Health, Reinsurance Group of America

Lenise Cummings-Vaughn, MD, Associate Professor of Medicine, Department of Internal Medicine, Division of Geriatrics and Nutritional Science, Washington University of St. Louis

Julie Hiblovic, Partner, Anders CPAs + Advisors

Suzan Knese, Chief Operating Officer, Osborn Barr

John Ludwig, PhD, Senior Vice President, Medicinal Sciences, Pfizer, Inc

Celeste Player, PharmD, Vice President & General Manager, Operations, Express Scripts, Inc.

Danny Pogue, President, Commercial, Retail & Small Business Banking, Midwest BankCentre

Lisa Richter, Managing Principal, Stakeholder Insights, LLC

Rick Stream, Former Missouri State Representative

Robert J. Tomek, Partner, Visiting Angels

Serge Traylor, Owner and Founder, 'ekwədē

Thank you to our Event Partners



SAINT LOUIS
UNIVERSITY™
— EST. 1818 —

The
CONTINUUM®
family of services.



Family
Partners™
TP
Home



Family™
Partners™ **TP**
Adult Day Services



Private Home Care

 Washington University Physicians®
Washington University School of Medicine in


AGESMART
COMMUNITY RESOURCES



AGING
AHEAD 


TRANSITIONS
FOR • SENIOR • LIVING™
Simplifying the Search

 **HOUSEFIT**
PHYSICAL THERAPY & FITNESS

ALZHEIMER'S  ASSOCIATION®
800.272.3900 | alz.org®



PROVIDING PEACE OF MIND
For Everyone!



Honoring One's Wishes to
Stay At Home, and
Enrich the Journey of Aging

Call for Care!  **314-466-3227**

AssistanceHomeCare.com



Assisted Living Locators

Your local senior living advisor™

The experts you can trust for one of the most important decisions you'll ever make.



Whether you can afford \$1,500 or \$15,000 per month, our free service can help you find the right senior living community in the entire area (St. Louis and St. Charles).

Find your perfect senior living community today (Independent Living, Assisted Living, Memory Care, and Skilled Nursing Care)!



1-314-380-3030



www.assistedlivinglocatorsstlouis.com



Rob Howe, Owner



Certified Care Management, LLC

• YOUR PERSONALIZED CARE CONSULTANT •

*Specialists in Care Management, Dementia,
Client Support Services and very proud to
work with Memory Care Home Solutions!*



www.certifiedcm.com • 636.218.8911

Care at Any Stage of Life



Contact Us Today for a Free Consultation!

(314) 863-9912

ContinuumCare.com

Continuum's unique team approach to care services in the home ensures the highest quality of personalized care for Private Pay, Medicaid and VA clients, including services such as:

- Companionship
- Meals and housework
- Personal care
- Transportation
- Dementia care
- Nursing services
- Care management



Our assisted living homes offer the ideal environment for those with dementia in a residential neighborhood:

- Private bedrooms
- Homestyle prepared meals
- A low, 8-13 person residency
- Enhanced safety of around-the-clock professional care
- Best staff to resident ratio – Avg 1:5 (compared to state standard of 1:15)
- Focus on each individual; no one gets “lost in the shuffle”
- House doctor as well as on-site nursing and hospice care when needed to avoid a move

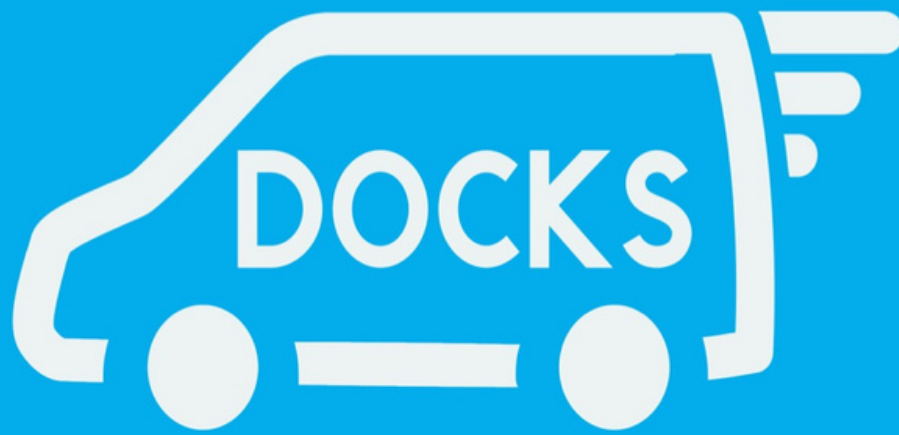


(314) 686-4444
FamilyPartners.com

In a comfortable, home-like setting, Family Partners' Adult Day Services provides a safe, socially active and supervised setting for individuals with memory loss to spend part or full days, offering:

- Engaging activities
- Personal care assistance
- Gentle exercise
- On-site salon/podiatrist
- Transportation

*Care Solutions
for Your Loved One*



Missouri - Family owned and operated

**NON EMERGENCY
TRANSPORTATION**

**WHEELCHAIR AND
STRETCHER ACCESSIBLE**

Make an appointment at
(636) 273.9468
www.docks-inc.com

- Medical Appointments
- Family events
- Hospice & Respite transport
- Dialysis appointments
- & much more!

Competitive rates!



CREATING HOPE THROUGH INNOVATION

At Eisai, everything we do is guided by a simple principle: patients and their families come first. We spend time with them. We listen and we learn about their lives, their desires and their greatest needs. *We call this human health care or hhc*, giving first thoughts to patients and their families and helping increase the benefits health care provides.

Our hhc mission is what drives us to discover innovative solutions and therapies that help address unmet needs within the communities that we seek to serve.

hhc
human health care

TO LEARN MORE, PLEASE VISIT WWW.EISAI.COM/US



Whatever Care You Need, Wherever You Are

Lutheran Senior Services Home & Community Based Services has a team of highly skilled professionals who can meet your medical and non-medical needs. We provide holistic care to help you maintain your independence and your wellbeing, wherever you call home.

Live your fullest life with services like:

- **Aging Answers:** Guidance and resources.
- **PACE:** Medical Care Management.
- **Private Duty Care:** Chores and support to help at home.
- **Home Health Care:** World-class in-home medical services.
- **Palliative Care:** Comfort for chronic conditions.
- **Hospice Care:** Compassionate end-of-life care.

Learn more about Lutheran Senior Services Home & Community Based Services by scanning the QR code or call 314.866.8937.





Private Home Care

Connecting People and Care

At PHC, we're redefining aging at home by offering concierge-level service that is consistent, transparent, and customized from the start to provide peace of mind for our clients and their families.

Our Live-In Program, professional care management, and local 24/7 support set us apart and allow our clients to age in place and independently for as long as desired.



Scan to Meet Available Caregivers.



Scan to See What Our Clients Are Saying.



Call our St. Louis team for a Complimentary In-Home Assessment today.

PRIVATEHOMECARE.COM
(314)492-4005

Private Home Care is family owned and locally operated

SHS GATEWAY REGION

TOM CINI

314-909-7200

SHSTOMCINI@GMAIL.COM



**SENIORS
HELPING
SENIORS®**

...a way to give and to receive®

SHS CENTRAL STL

ROXANNE JACOBSON

636-294-3012

SHSCENTRALSTL@GMAIL.COM

Upcoming Key Dates

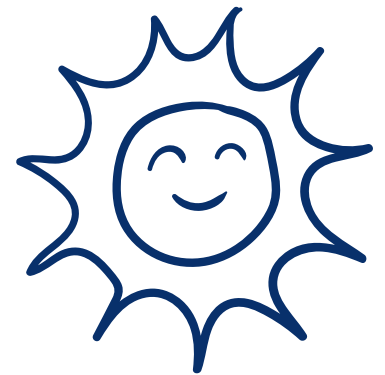
Join us for more great opportunities for education, connection, and partnership.



Community Education Lunch & Learn's provides a chance for the community to tour our caregiver training facility and learn about how MCHS can help your family while getting a delicious catered lunch and networking with other organizations!

The next tour occurs on **June 5th**. Limited seating available. **Registration required.**

Our **Annual Spring Campaign** began in March and will culminate into a day of gratitude and day of giving on **Thursday, May 9th**. Help change the life of a family by springing into action and giving to MCHS today. Because of generous supporters, no family is turned away.



Our **Spring Open House** on **Thursday, May 23rd**. Visit our headquarters and caregiver training venue, enjoy light refreshments, learn more about MCHS, and network!

Our **Annual Gala and Auction** will be on **Saturday, November 16th** at Chase Park Plaza. You won't want to miss a night focused on the future of quality dementia care featuring the Charles Glenn Trio!



To learn more and stay connected, contact Candace Schwartzkopf at CSchwartzkopf@memorycaresh.org

Notes

A series of horizontal lines for taking notes, framed by a blue border. The lines are evenly spaced and extend across the width of the page, providing a guide for handwriting.

Notes

A series of 18 horizontal lines for writing notes, framed by a blue border. The lines are evenly spaced and extend across the width of the page, providing a structured area for taking notes.

Memory Care Home Solutions exists to improve dignity and quality of life for people living with dementia and their care partners by transforming evidence-based interventions into effective healthcare solutions.

Because of supporters like you, we have provided hope and quality of life to families *for over 22 years. Thank you!*

Scan here to make an impact today!

